



Safeguarding and Child Protection Policy

Date agreed with Trustees	September 2023
Date to be reviewed	September 2024

Please note:

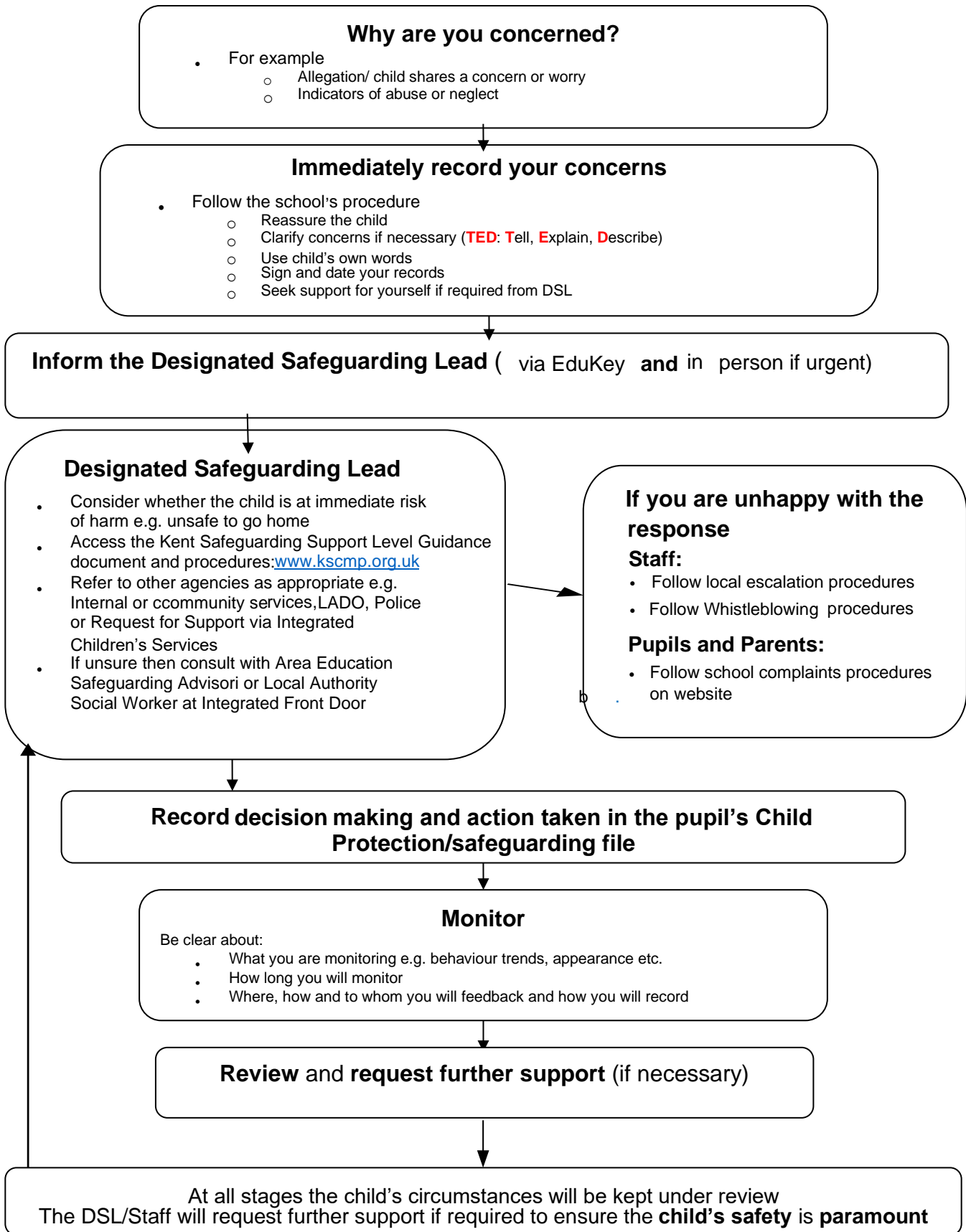
This policy covers all schools within Endeavour MAT

- **Key Safeguarding contacts can be found on each individual school website.**

Contents

	Page no
What to do if you have a welfare concern - flowchart	3
1. Introduction and Ethos	4
2. Policy context	4
3. Definition of Safeguarding	5
4. Related Safeguarding Policies	6
5. Policy compliance, monitoring and review	6
6. Key Responsibilities	7
7. Recognition and Types of Abuse and Neglect	10
8. Confidentiality and Information sharing	14
9. Complaints	14
10. Specific safeguarding issues	15
11. Supporting Children Potentially at Greater Risk of Harm	21
12. Staff Induction, Awareness and Training	24
13. Safer Working Practice	25
14. Staff Supervision and Support	25
15. Safer Recruitment and Safeguarding Checks	26
16. Allegations Against Members of Staff and Volunteers	26
17. Opportunities to teach Safeguarding	29
18. Online Safety	29
19. The Use of School Premises by Other Organisations	32
20. Security	32
21. Local Support	33
22. National Support	33
Appendix 1: Categories of Abuse	35
Appendix 2: Support Organisations	38

What to do if you have a welfare concern



1. Introduction and Ethos

- Endeavour MAT Schools recognise our statutory responsibility to safeguard and promote the welfare of all children. Safeguarding is everybody's responsibility and all those directly connected (staff, volunteers, governors, leaders, parents, families, and pupils/students) are an important part of the wider safeguarding system for children and have an essential role to play in making this community safe and secure. Key Safeguarding contacts can be found on each individual school website.
- Endeavour MAT Schools believe that the best interests of children always come first. All children (defined as those up to the age of 18) have a right to be heard and to have their wishes and feelings taken into account and all children regardless of age, gender, ability, culture, race, language, religion or sexual identity or orientation, have equal rights to protection.
- Staff working with children at Endeavour MAT Schools will maintain an attitude of 'it could happen here' where safeguarding is concerned. When concerned about the welfare of a child, staff will always act in the best interests of the child and if any member of our community has a safeguarding concern about any child or adult, they should act and act immediately.
- Endeavour MAT Schools recognise the importance of providing an ethos and environment within school/college that will help children to be safe and to feel safe. In our schools children are respected and are encouraged to talk openly. We will ensure children's wishes and feelings are taken into account when determining what safeguarding action to take and what services to provide.
- Our core safeguarding principles are:
 - Prevention: positive, supportive, safe culture, curriculum and pastoral opportunities for children, safer recruitment procedures.
 - Protection: following the agreed procedures, ensuring all staff are trained and supported to recognise and respond appropriately and sensitively to safeguarding concerns.
 - Support: for all pupils/students, parents and staff, and where appropriate specific interventions are required for those who may be at risk of harm.
 - Collaborating with parents and other agencies: to ensure timely, appropriate communications and actions are undertaken when safeguarding concerns arise.
- The procedures contained in this policy apply to all staff, including governors, temporary or third-party agency staff and volunteers, and are consistent with those outlined within 'Keeping Children Safe in Education' (KCSIE) 2023.

2. Policy context

- This policy is implemented in accordance with our compliance with the statutory guidance from the Department for Education, 'Keeping Children Safe in Education' 2023 (KCSIE) which requires individual schools and colleges to have an effective child protection policy.
- This policy has been developed in accordance with the principles established by the Children Acts 1989 and 2004 and related guidance. This includes but is not limited to:
 - DfE guidance Keeping Children Safe in Education September 2023(KCSIE September 2023)
 - Working Together to Safeguard Children 2018 (WTSC)

- Ofsted guidance 'Inspecting safeguarding in early years, education and skills settings' (2018)
 - Framework for the Assessment of Children in Need and their Families (2000)
 - Kent and Medway Safeguarding Children Procedures (Online)
 - Early Years and Foundation Stage Framework 2023 (EYFS)
 - The Education Act 2002
 - The Human Rights Act 1998
 - The Equality Act 2010 (including the Public Sector Equality Duty)
- Section 175 of the Education Act 2002 requires school governing bodies, local education authorities and further education institutions to make arrangements to safeguard and promote the welfare of all children who are pupils at a school, or who are students under 18 years of age. Such arrangements will have to have regard to any guidance issued by the Secretary of State.
 - Endeavour MAT Schools will continue to follow government guidance in response to the coronavirus (Covid-19), however, our safeguarding principles, remain the same. We will continue to follow government guidance and will amend this policy and our approaches, as necessary. As a result of the Covid-19 pandemic we recognise that some members of our community may have been exposed to a range of adversity and trauma including bereavement, anxiety and in some cases increased welfare and safeguarding risks. We will work with local services, such as health and the local authority, to ensure necessary support is in place.

3. Definition of Safeguarding

- In line with KCSIE 2023, safeguarding and promoting the welfare of children is defined for the purposes of this policy as:
 - a. protecting children from maltreatment
 - b. preventing impairment of children's mental and physical health or development
 - c. ensuring that children grow up in circumstances consistent with the provision of safe and effective care, and
 - d. taking action to enable all children to have the best outcomes.
- Endeavour Mat Schools acknowledge that this policy recognises a range of specific safeguarding issues including (but not limited to):
 - Abuse and neglect
 - Bullying, including cyberbullying
 - Child-on-child abuse
 - Children with family members in prison
 - Children Missing Education (CME) (Children who are not on any school roll or being educated elsewhere)
 - Children Absent from Education (Children who are on the school roll, but are regularly not attending)
 - Child missing from home or care
 - Child Sexual Exploitation (CSE)
 - Child Criminal Exploitation (CCE)
 - Contextual safeguarding (risks outside the family home)
 - County lines and gangs
 - Domestic abuse
 - Drugs and alcohol misuse
 - Fabricated or induced illness
 - Faith abuse

- Gender based abuse and violence against women and girls
- Hate
- Homelessness
- Human trafficking and modern slavery
- Mental health
- Nude or semi-nude image sharing, aka youth produced/involved sexual imagery or “Sexting”
- Online safety
- Peer on peer abuse
- Preventing radicalisation and extremism
- Private fostering
- Relationship abuse
- Serious violence
- Sexual violence and sexual harassment
- So-called ‘honour-based’ abuse, including Female Genital Mutilation (FGM) and forced marriage (see update 2023 section 10.6)
- Upskirting

(Also see Part One and Annex B within ‘Keeping Children Safe in Education’ 2023)

- The procedures contained in this policy apply to all staff (including temporary staff and volunteers) and governors and are consistent with those of Kent Safeguarding Children Multi-Agency Partnership (KSCMP).

4. Related Safeguarding Policies

The policy is one of a series in the school’s integrated safeguarding portfolio and should be read in conjunction with the policies as listed below:

- Behaviour Management, linked to the Use of Physical Intervention
- Searching, screening and confiscation
- Online Safety policy
- Anti-Bullying
- Data Protection and Information Sharing
- Sex & Relationship Education
- Health and Safety
- Attendance
- Risk Assessments (e.g. school trips, use of technology)
- Disciplinary Policy
- Code of Conduct (including Acceptable Use of Technology)
- Safer Recruitment
- Whistleblowing

5. Policy Compliance, Monitoring and Review

- Endeavour MAT Schools will review this policy at least annually (as a minimum) and will update it as needed, so that it is kept up to date with safeguarding issues as they emerge and evolve, including

lessons learnt. The policy will also be revised following any national or local updates, significant local or national safeguarding events and/or learning, and/or any changes to our own procedures.

- All staff (including temporary staff and volunteers) will be provided with a copy of this policy and Part One and/or Annex A of KCSIE 2023 as appropriate. This can be found on the staff drive under Safeguarding documents.
- Parents/carers can obtain a copy of the Child Protection Policy and other related policies on request. Additionally, our policies can be viewed via the Trust and individual school websites:
- The policy forms part of our school development plans and will be reviewed annually
- The Designated Safeguarding Lead and Head Teacher will ensure regular reporting on safeguarding activity and systems to the governing body and Trustees. The governing body/and Trustees/leadership will not receive details of individual learner situations or identifying features of families as part of their oversight responsibility.

6. Key Responsibilities

6.1 Governance and Leadership

- The Trust Board, governing body and leadership team have a strategic responsibility for our safeguarding arrangements and will comply with their duties under legislation.
- The relevant section from our Scheme of Delegation explains where accountability sits:

The Trust Board will:	The Education and Safeguarding Committee will:	The Executive Team (ET) will:	The Local Governing Body (LGB) will:	The Head Teacher (HT) will:
<p>Safeguarding</p> <p>- agree the Trust-wide safeguarding policy and have ultimate responsibility for safeguarding across the Trust.</p>	<p>- advise the Trust Board in matters of safeguarding. Acting in accordance with the Terms of Reference set for the committee and reviewed by the Trust Board annually.</p>	<p>The CEO will:</p> <ul style="list-style-type: none"> - develop and propose the safeguarding policy. - ensure that all schools adopt compliant safeguarding practices and procedures as determined by the Trust. - monitor safeguarding across the Trust for compliance and report to the Trust Board. 	<ul style="list-style-type: none"> - appoint monitoring governor(s) for safeguarding and receive monitoring reports. 	<ul style="list-style-type: none"> - develop the school safeguarding procedures and practices in accordance with Trust policy. - ensure compliance with the safeguarding policy within the school. - engender a culture that promotes safeguarding, including the reporting of any safeguarding incidents.

- The Trust Board and governing body have regard to the KCSIE 2023 guidance and will ensure our policies, procedures and training are effective and complies with the law at all times.
- The school has a nominated governor for safeguarding. The nominated governor will support the DSL and have oversight in ensuring that the school has an effective policy which interlinks with other related policies, that locally agreed procedures are in place and being followed, and that the policies are reviewed at least annually and when required.

- The governing body and leadership team will ensure that the DSL is supported in their role and is provided with sufficient time so they can provide appropriate support to staff and children regarding any safeguarding and welfare concerns.
- The Head Teachers will ensure that our child protection and safeguarding policies and procedures adopted by the Trust Board, are understood, and followed by all staff and Governors.

6.2 Designated Safeguarding Lead (DSL)

- Endeavour MAT has appointed a member of the Senior Leadership Team as the Designated Safeguarding Lead (DSL) in each school.
- The DSL has the overall responsibility for the day to day oversight of safeguarding and child protection systems (including online safety) in school.
- The DSL will undergo appropriate and specific training to provide them with the knowledge and skills required to carry out their role. The DSL and any deputy DSL's training will be updated formally every two years but their knowledge and skills will be updated through a variety of methods at regular intervals and at least annually.
- Deputy DSLs are trained to the same standard as the DSL.
- Whilst the activities of the DSL may be delegated to the deputies, the ultimate lead responsibility for safeguarding and child protection remains with the DSL and this responsibility will not be delegated.

It is the role of the DSL to:

- Carry out their functions as identified in Annex C of KCSIE 2023. This includes but is not limited to:
 - Acting as the central contact point for all staff to discuss any safeguarding concerns
 - Maintaining a confidential recording system for safeguarding and child protection concerns
 - Coordinating safeguarding action for individual children
 - When supporting children with a social worker or looked after children, the DSL should have the details of the child's social worker and the name of the virtual school head in the authority that looks after the child (with the DSL liaising closely with the designated teacher)
 - Liaising with other agencies and professionals in line with KCSIE 2023 and WTSC 2018
 - Ensuring that locally established procedures as put in place by the three safeguarding partners as part of the Kent Safeguarding Children Multi-Agency Partnership procedures (KSCMP), including referrals, are followed, as necessary.
 - Representing, or ensure the school is appropriately represented at multi-agency safeguarding meetings (including child protection conferences)
 - Managing and monitoring the school role in any multi-agency plan for a child.
 - Being available during term time (during school hours) for staff in the school to discuss any safeguarding concerns.
 - Helping promote educational outcomes by sharing the information about the welfare, safeguarding and child protection issues that children, including children with a social worker, are experiencing, or have experienced, with teachers and school leadership staff.
 - Ensuring adequate and appropriate DSL cover arrangements in response to any closures and out of hours and/or out of term activities.
 - Ensuring all staff access appropriate safeguarding training and relevant updates in line with the recommendations within KCSIE.
 - Liaising with the Head Teacher to inform them of any safeguarding issues, especially ongoing enquiries under section 47 of the Children Act 1989 and police investigations. This includes being aware of the requirement for children to have an Appropriate Adult ([PACE Code C 2019](#)).

6.3 Members of Staff

- **All members of staff have a responsibility to:**
 - Provide a safe environment in which children can learn.
 - Be prepared to identify children who may benefit from early help.
 - Consider wider environmental factors in a child's life that may be a threat to their safety and/or welfare.
 - Understand the early help process and their role in it.
 - Understand their schools safeguarding policies and systems.
 - Undertake regular and appropriate training which is regularly updated.
 - Be aware of the local process of making referrals to children's social care and statutory assessment under the Children Act 1989.
 - Know what to do if a child tells them that he or she is being abused or neglected.
 - Know how to maintain an appropriate level of confidentiality.
 - Be aware of the indicators of abuse and neglect so that they are able to identify cases of children who may be in need of help or protection.
 - Reassure children who report concerns that they are being taken seriously and that they will be supported and kept safe.
 - Act in line with Teachers' Standards 2012 which state that teachers (including Head Teachers) should safeguard children's wellbeing and maintain public trust in the teaching profession as part of their professional duties.
- Staff at Endeavour MAT Schools recognise that children may not feel ready or know how to tell someone that they are being abused, exploited, or neglected, and/or they may not recognise their experiences as being abusive or harmful. This should not prevent staff from having professional curiosity and speaking to a DSL if they have any concerns about a child.
- Staff at Endeavour MAT Schools will determine how best to build trusted relationships with children, young people and parents/carers which facilitate appropriate professional communication in line with existing and relevant policies, for example, our staff code of conduct and student behaviour policies.

6.4 Children and Young People

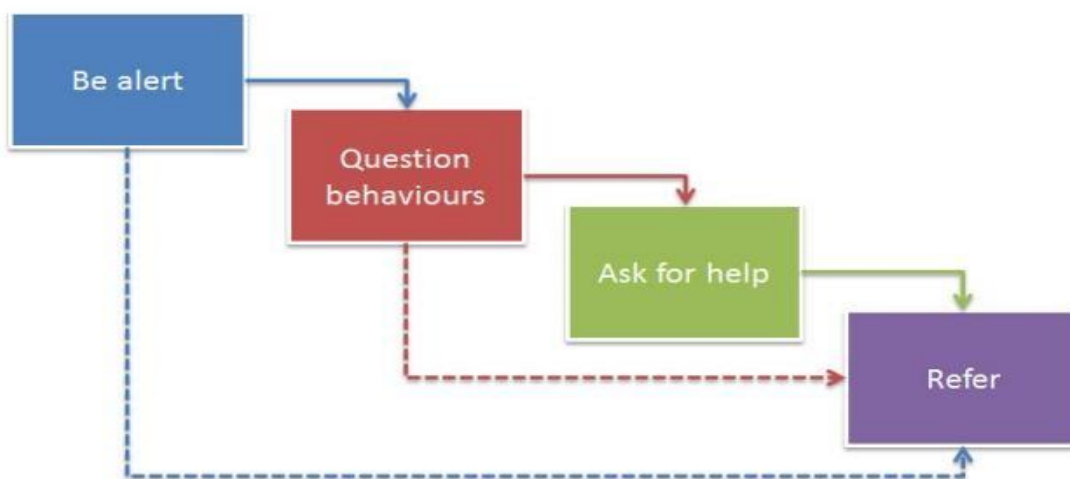
- **Children and young people (pupils) have a right to:**
 - Feel safe, be listened to, and have their wishes and feelings taken into account.
 - Confidently report abuse, knowing their concerns will be treated seriously, and knowing they can safely express their views and give feedback.
 - Contribute to the development of school safeguarding policies
 - Receive help from a trusted adult. (At Endeavour MAT Schools we also have a Safeguarding Team which contains a number of staff who have been identified as readily available to discuss any concerns with pupils)
 - Learn how to keep themselves safe by recognising when they are themselves at risk and how to get help when they need it, including online.

6.5 Parents and Carers

- **Parents/carers have a responsibility to:**
 - Understand and adhere the relevant school/policies and procedures.
 - Talk to their children about safeguarding issues with their children & support the school in their safeguarding approaches.
 - Identify behaviours which could indicate that their child is at risk of harm including online.
 - Seek help and support from the school or other agencies.

7. Recognition and Types of Abuse and Neglect

- Staff will maintain an attitude of 'it could happen here' where safeguarding is concerned. When concerned about the welfare of a child, staff will always act in the best interests of the child.
- All staff are made aware of the definitions and indicators of abuse and neglect as identified by Working Together to Safeguard Children (2018) and Keeping Children Safe in Education 2023. This is outlined locally within the Kent Support Levels Guidance.
- Endeavour MAT Schools recognise that when assessing whether a child may be suffering actual or potential harm there are four categories of abuse (For further information, see Appendix 1):
 - Physical abuse
 - Sexual abuse
 - Emotional abuse
 - Neglect
- Endeavour MAT Schools recognise that concerns may arise in many different contexts and can vary greatly in terms of their nature and seriousness. The indicators of child abuse and neglect can vary from child to child. Children develop and mature at different rates, so what appears to be worrying behaviour for a younger child might be normal for an older child. It is important to recognise that indicators of abuse and neglect do not automatically mean a child is being abused however all concerns should be taken seriously and will be explored by the DSL on a case-by-case basis.
- Endeavour MAT Schools recognise abuse, neglect, and safeguarding issues are rarely standalone events and cannot always be covered by one definition or one label alone. In many cases, multiple issues will overlap with one another, therefore staff will always be vigilant and always raise concerns with a DSL.
- Parental behaviours can indicate child abuse or neglect, so staff will be alert to parent-child interactions or concerning parental behaviours; this could include parents who are under the influence of drugs or alcohol or if there is a sudden change in their mental health.
- Children may report abuse happening to themselves, their peers or their family members. All reports made by children to staff will be taken seriously and will be responded to in line with this policy.
- Safeguarding incidents and/or behaviours can be associated with factors and risks outside the Endeavour MAT Schools. Children can be at risk of abuse or exploitation in situations outside their families; extra-familial harms take a variety of different forms and children can be vulnerable to multiple harms including (but not limited to) sexual exploitation, criminal exploitation, sexual abuse, serious youth violence and county lines.
- By understanding the indicators of abuse and neglect, we can respond to problems as early as possible and provide the right support and services for the child and their family.
- All members of staff are expected to be aware of and follow this approach if they are concerned about a child:



[‘What to do if you are worried a child is being abused’ 2015](#)

- In all cases, if staff are unsure, they will always speak to the DSL (or deputy).
- Endeavour MAT Schools recognise that technology can be a significant component in many safeguarding and wellbeing issues; children are at risk of abuse online from people they know (including other children) and from people they do not know; in many cases, abuse will take place concurrently via online channels and in daily life.
- Endeavour MAT Schools recognise that some children have additional or complex needs and may require access to intensive or specialist services to support them.
 - Following a concern about a child’s safety or welfare, the searching and screening of children and confiscation of any items, including any electronic devices, will be managed in line with the school behaviour policy and/or ‘Searching, Screening and Confiscation’ policy which is informed by the DfE [‘Searching, screening and confiscation in school’](#) guidance. The DSL (or deputy) will be informed of any searching incidents where there were reasonable grounds to suspect a student was in possession of a prohibited item as listed in our behaviour policy. The DSL (or deputy) will then consider the circumstances of the student who has been searched to assess the incident against any potential wider safeguarding concerns.
 - Staff will involve the DSL (or deputy) without delay if they believe that a search has revealed a safeguarding risk.

7.1 Responding to Child Protection Concerns

- If staff are made aware of a child protection concern, they are expected to:
 - listen carefully to the concern and reflect back the concern.
 - Use the child’s language.
 - Be non-judgemental.
 - only use open questions to clarify information where necessary, e.g. who, what, where, when or Tell, Explain, Describe (TED).
 - not promise confidentiality as concerns will have to be shared further, for example, with the DSL and potentially Integrated Children’s Services.
 - be clear about boundaries and how the report will be progressed.

- record the concern in line with school record keeping requirements.
 - inform the DSL (or deputy), as soon as practically possible.
- The DSL or a deputy should always be available to discuss safeguarding concerns. If in exceptional circumstances, a DSL is not available, this should not delay appropriate action being taken. Staff should speak to a member of the senior leadership team and/or take advice from Education Safeguarding Service or via consultation with a social worker from the Front Door. In these circumstances, any action taken will be shared with a DSL as soon as is practically possible.
 - Endeavour MAT Schools will respond to concerns in line with the Kent Safeguarding Children Multi-Agency Partnership procedures (KSCMP).
 - The full KSCMP procedures and additional guidance relating to reporting concerns and specific safeguarding issues can be found on their website: www.kscmp.org.uk
 - Specific information and guidance to follow with regards to accessing Early Help and Preventative Services and/or Children's Social Work Services as part of Integrated Children's Services (ICS) in Kent can be found here: www.kelsi.org.uk/support-for-children-and-youngpeople/integrated-childrens-services
 - Where a child is suffering, or is likely to suffer from harm, or is in immediate danger, a 'request for support' will be made immediately to Integrated Children's Services (via the 'Front Door') and/or the police, in line with [KSCMP procedures](#).
 - Endeavour MAT Schools recognise that in situations where there are immediate child protection concerns for a child as identified in line with Support Level Guidance, it is NOT to investigate as a single agency, but to act in line with KSCMP guidance which may involve multi-agency decision making.
 - The DSL may seek advice or guidance from their Area Education Safeguarding Advisor from the Education Safeguarding Service before deciding next steps.
 - They may also seek advice or guidance from a social worker at the Front Door service who are the first point of contact for Integrated Children's Services (ICS).
 - In the event of a request for support to the Front Door being necessary, parents/carers will be informed and consent to this will be sought by the DSL in line with guidance provided by KSCMP and ICS. Parents/carers will be informed of this, unless there is a valid reason not to do so, for example, if to do so would put a child at risk of harm or would undermine a criminal investigation.
 - All staff are aware of the process for making request for support referrals for statutory assessments under the Children Act 1989, along with the role they might be expected to play in such assessments.
 - Where it is identified a child may benefit from Early Help support (as provided by ICS), the DSL (or deputy) will generally lead as appropriate and make a request for support via the Front Door.
 - The DSL will keep all early help cases under constant review and consideration will be given to escalating concerns to the Front Door or seeking advice via the Education Safeguarding Service if the situation does not appear to be improving or is getting worse.
 - If, after a request for support or any other planned external intervention, a child's situation does not appear to be improving or there is a concern regarding decisions made, the DSL will consider following [KSCMP escalation procedures](#) to ensure their concerns have been addressed and, most importantly, that the child's situation improves. DSLs may request support with this via the Education Safeguarding Service.

- Endeavour MAT Schools is an [Operation Encompass School](#). This means we work in partnership with Kent Police to provide support to children experiencing domestic abuse.

7.2 Recording Concerns

- All safeguarding concerns, discussions and decisions, and reasons for those decisions, will be recorded on Edukey which will be passed without delay to the DSL.
- Records will be completed as soon as possible after the incident/event, using the child's words and will be recorded and dated by the member of staff. Child protection records will record facts and not personal opinions. A body map will be completed if injuries have been observed.
- If there is an immediate safeguarding concern the member of staff will consult with the DS, or deputies, before completing the form as reporting urgent concerns takes priority.
- If members of staff are in any doubt about recording requirements, they will discuss their concerns with the DSL.
- Child protection records will include a clear and comprehensive summary of the concern, details of how the concern was followed up and resolved and details regarding any action taken, decisions reached and the outcome.
- Child protection records will be kept confidential and stored securely. Child protection records will be kept for individual children and will be maintained separately from all other records relating to the child in the school. Child protection records are kept in accordance with data protection legislation and are retained centrally and securely by the DSL.
- All child protection records will be transferred in accordance with data protection legislation to the child's subsequent school, under confidential and separate cover as soon as possible; within 5 days for an in-year transfer or within the first 5 days of the start of a new term. Child Protection files will be transferred securely to the new DSL, separately to the child's main file, and a confirmation of receipt will be obtained.
- In addition to the child protection file, the DSL will also consider if it would be appropriate to share any information with the DSL at the new school or in advance of a child leaving, for example, information that would allow the new school to continue to provide support.
- Where the school receives child protection files, the DSL will ensure key staff such as the special educational needs co-ordinators with oversight for SEN, will be made aware of relevant information as required.
- Where a student joins the school and no child protection files are received, the DSL will proactively seek to confirm from the previous setting whether any child protections exist for the pupil and if so, if the files have been sent.

7.3 Multi-agency Working

- Endeavour MAT Schools recognise and are committed to their responsibility to work within the KSCMP multi-agency safeguarding arrangements. The leadership team and DSL will work to establish strong and co-operative local relationships with professionals in other agencies in line with statutory guidance.
- Endeavour MAT Schools recognise the importance of multi-agency working and are committed to working alongside partner agencies to provide a coordinated response to promote children's welfare and protect them from harm. This includes contributing to KSCMP processes as required, such as,

participation in relevant safeguarding multi-agency plans and meetings, including Child Protection Conferences, Core Groups, Strategy Meetings, Child in Need meetings or other early help multi-agency meetings.

8 Confidentiality and Information Sharing

- Endeavour MAT Schools recognise our duty and powers to hold, use and share relevant information with appropriate agencies in matters relating to child protection at the earliest opportunity as per statutory guidance outlined within KCSIE 2023.
- Endeavour MAT Schools have an appropriately trained Data Protection Officer (DPO) as required by the General Data Protection Regulations (GDPR) to ensure that our school is compliant with all matters relating to confidentiality and information sharing requirements. DPO is Mrs Joy Price.
- The Data Protection Act 2018 and GDPR do not prevent the sharing of information for the purposes of keeping children safe. Fears about sharing information must not be allowed to stand in the way of the need to safeguard and promote the welfare and protect the safety of children (KCSIE 2023). DfE "[Information sharing advice for safeguarding practitioners](#)" (2018) provides further detail, which is kept in the staffroom.
- The Head Teacher and DSL will disclose relevant safeguarding information about a learner with staff on a 'need to know' basis.
- All members of staff must be aware that whilst they have duties to keep information confidential, they also have a professional responsibility to be proactive in sharing information as early as possible to help identify, assess, and respond to risks or concerns about the safety and welfare of children; this may include sharing information with the DSL and with other agencies as appropriate. All staff are aware they cannot promise a child that they will not tell anyone about a report of any form of abuse, as this may not be in the best interests of the child.

9 Complaints

- All members of the school community should feel able to raise or report any concerns about children's safety or potential failures in the school safeguarding regime. The school has a complaints procedure available to parents, learners and members of staff and visitors who wish to report concerns or complaints. This can be found on the school website.
- Whilst we encourage members of our community to report concerns and complaints directly to us, we recognise this may not always be possible. Children, young people, and adults who have experienced abuse at school can contact the NSPCC 'Report Abuse in Education' helpline on [0800 136 663](tel:0800136663) or via email: help@nspcc.org.uk
- Staff can also access the NSPCC whistleblowing helpline if they do not feel able to raise concerns regarding child protection failures internally.
 - Staff can call 0800 028 0285 (8:00 AM to 8:00 PM Monday to Friday) or email help@nspcc.org.uk.

- The leadership team at Endeavour MAT Schools will take all concerns reported to the school seriously and all complaints will be considered and responded to in line with the relevant and appropriate process.
 - Anything that constitutes an allegation against a member of staff or volunteer will be dealt with in line with section 16 of this policy.
- The school has a **Complaints Procedure** available to parents, pupils and members of staff and visitors who wish to report concerns. This can be found on the school website.
- All reported concerns will be taken seriously and considered within the relevant and appropriate process. Anything that constitutes an allegation against a member of staff or volunteer will be dealt with under the Disciplinary Policy. This can be found in the school office.

10 Specific Safeguarding Issues

- Endeavour MAT Schools are aware of a range of specific safeguarding issues and situations that can put children at greater risk of harm. In addition to Part One, DSLs, school leaders and staff who work directly with children will read annex B of KCSIE 2023 which contains important additional information about specific forms of abuse and safeguarding issues.
- Where staff are unsure how to respond to specific safeguarding issues, they should follow the processes as identified in part 7 of this policy and speak with the DSL or a deputy.

10.1 Child-on-child Abuse

- All members of staff at Endeavour MAT Schools recognise that children can abuse other children (referred to as child-on-child abuse, previously known as ‘peer-on-peer’ abuse) and that it can happen both inside and outside of school and online.
- Endeavour MAT Schools recognises that child-on-child abuse can take many forms, including but not limited to:
 - Bullying, including cyberbullying, prejudice-based and discriminatory bullying
 - Abuse in intimate personal relationships between children
 - Physical abuse which can include hitting, kicking, shaking, biting, hair pulling, or otherwise causing physical harm
 - Sexual violence and sexual harassment
 - Consensual and non-consensual sharing of nudes and semi-nude images and/or videos (also known as sexting or youth produced sexual imagery)
 - Causing someone to engage in sexual activity without consent, such as forcing someone to strip, touch themselves sexually, or to engage in sexual activity with a third party
 - Upskirting (which is a criminal offence), which typically involves taking a picture under a person’s clothing without their permission, with the intention of viewing their genitals or buttocks to obtain sexual gratification, or cause the victim humiliation, distress or alarm
 - Initiation/hazing type violence and rituals
- Endeavour MAT Schools believes that abuse is abuse and it will never be tolerated or dismissed as “just banter”, “just having a laugh”, “part of growing up” or “boys being boys” as this can lead to a culture of unacceptable behaviours and a culture that normalises abuse, which can prevent children from coming forward to report it.

- Any allegations of child-on-child abuse will be recorded, investigated, and dealt with in line with this child protection policy and KCSIE 2023 (in particular, art two and five).
- Endeavour MAT Schools recognise that even if there are no reported cases of child-on child, such abuse is still likely to be taking place and it may be the case that it is just not being reported. As such, it is important that staff speak to the DSL about any concerns regarding child-on child abuse.
- All staff have a role to play in challenging inappropriate behaviours between children. Staff recognise that that some child-on-child abuse issues may be affected by gender, age, ability and culture of those involved, i.e., for gender-based abuse, girls are more likely to be victims and boys more likely to be perpetrators.
- Concerns about learner’s behaviour, including child-on-child abuse taking place offsite will be responded to as part of a partnership approach with learners and parents/carers. Offsite behaviour concerns will be recorded and responded to in line with existing appropriate policies, for example antibullying, acceptable use, behaviour and child protection policies.
- In order to minimise the risk of child-on-child abuse, Endeavour MAT Schools will: provide an age appropriate PSHE and RSE curriculum and employ a robust behaviour policy with a clear anti-discrimination code of conduct.
- Endeavour MAT Schools want pupils to feel able to confidently report abuse and know their concerns will be treated seriously. All allegations of child-on-child abuse will be reported to the DSL and will be recorded, investigated, and dealt with in line with associated school policies, including child protection, anti-bullying and behaviour. Learners who experience abuse will be offered appropriate support, regardless of where the abuse takes place.
- Alleged victims, perpetrators and any other pupil affected by child-on-child abuse will be supported by
 - Taking reports seriously and listening carefully
 - Avoiding victim blaming
 - Providing appropriate pastoral support
 - Working with parents/carers
 - Reviewing educational approaches
 - Following procedures as identified in other policies e.g. the school anti-bullying, behaviour and child protection policy
 - Where necessary and appropriate, informing the police and or ICS.

10.2 Child on Child Sexual Violence or Harassment

- When responding to concerns relating to child on child sexual violence or harassment, Endeavour MAT Schools will follow the guidance outlined in Part Five of KCSIE 2023.
- Endeavour MAT Schools recognise that sexual violence and sexual abuse can happen anywhere, and all staff will maintain an attitude of ‘it could happen here’. Endeavour MAT Schools recognise sexual violence and sexual harassment can occur between two children of any age and sex. It can occur through a group of children sexually assaulting or sexually harassing a single child or group of children and can occur online and face to face (both physically and verbally). Sexual violence and sexual harassment is never acceptable.

- All victims of sexual violence or sexual harassment will be reassured that they are being taken seriously and that they will be supported and kept safe. A victim will never be given the impression that they are creating a problem by reporting sexual violence or sexual harassment or be made to feel ashamed for making a report.
- Abuse that occurs online or outside of the Endeavour MAT Schools will not be dismissed or downplayed and will be treated equally seriously and in line with relevant policies/procedures, for example, behaviour, child protection, online safety.
- Endeavour MAT Schools recognise that the law is in place to protect children and young people rather than criminalise them, and this will be explained in such a way to students that avoids alarming or distressing them.
- Endeavour MAT Schools recognise that an initial disclosure to a trusted adult may only be the first incident reported, rather than representative of a singular incident and that trauma can impact memory, so children may not be able to recall all details or timeline of abuse. All staff will be aware certain children may face additional barriers to telling someone, for example because of their vulnerability, disability, sex, ethnicity, and/or sexual orientation.
- The DSL (or deputy) is likely to have a complete safeguarding picture and will be the most appropriate person to advise on the initial response.
 - The DSL will make an immediate risk and needs assessment which will be considered on a case-by-case basis which explores how best to support and protect the victim and the alleged perpetrator, and any other children involved/impacted, in line with part five of KCSIE 2023 and relevant local/national guidance and support, for example [KSCMP](#) procedures and support from the [Education Safeguarding Service](#).
 - The risk and needs assessment will be recorded and kept under review and will consider the victim (especially their protection and support), the alleged perpetrator, and all other children, adult students (**if appropriate**), and staff and any actions that are required to protect them.
 - Any concerns involving an online element will take place in accordance with relevant local/national guidance and advice.
- Reports will initially be managed internally by the school and where necessary will be referred to [Integrated Children's Services](#) (Early Help and/or Children's Social Work Service) and/or the police. Important considerations which may influence this decision include:
 - the wishes of the victim in terms of how they want to proceed.
 - the nature of the alleged incident(s), including whether a crime may have been committed and/or whether Harmful Sexual Behaviour has been displayed.
 - the ages of the children involved.
 - the developmental stages of the children involved.
 - any power imbalance between the children.
 - if the alleged incident is a one-off or a sustained pattern of abuse - sexual abuse can be accompanied by other forms of abuse and a sustained pattern may not just be of a sexual nature.
 - that sexual violence and sexual harassment can take place within intimate personal relationships between children.
 - understanding intra familial harms and any necessary support for siblings following incidents.
 - whether there are any ongoing risks to the victim, other children, adult students, or school staff.
 - any other related issues and wider context, including any links to child sexual exploitation and child criminal exploitation.

- The school will in most instances engage with both the victim's and alleged perpetrator's parents/carers when there has been a report of sexual violence; this might not be necessary or proportionate in the case of sexual harassment and will depend on a case-by-case basis. The exception to this is if there is a reason to believe informing a parent/carer will put a child at additional risk. Any information shared with parents/carers will be in line with information sharing expectations, our confidentiality policy, and any data protection requirements, and where they are involved, will be subject to discussion with other agencies (for example Children's Social Work Service and/or the police) to ensure a consistent approach is taken.
- If at any stage the DSL is unsure how to proceed, advice will be sought from the Education Safeguarding Service.

10.3 Nude and/or Semi-Nude Image Sharing by Children

The term 'sharing nudes and semi-nudes' is used to mean the sending or posting of nude or semi-nude images, videos or live streams of/by young people under the age of 18. Creating and sharing nudes and semi-nudes of under-18s (including those created and shared with consent) is illegal which makes responding to incidents complex.

The [UKCIS Sharing nudes and semi-nudes: advice for education settings working with children and young people guidance](#) outlines how schools should respond to all incidents of consensual and non-consensual image sharing, and should be read and understood by DSLs working with all age groups, not just older learners.

- Endeavour MAT Schools recognise that consensual and non-consensual sharing of nudes and semi-nude images and/or videos (also known as youth produced/involved sexual imagery or "sexting") can be a safeguarding issue; all concerns will be reported to and dealt with by the DSL (or deputy).
- When made aware of concerns involving consensual and non-consensual sharing of nudes and semi-nude images and/or videos by children, staff are advised to:
 - Report any concerns to the DSL immediately.
 - Never view, copy, print, share, store or save the imagery, or ask a child to share or download it – this may be illegal. If staff have already viewed the imagery by accident, this will be immediately reported to the DSL.
 - Not delete the imagery or ask the child to delete it.
 - Not say or do anything to blame or shame any children involved.
 - Explain to child(ren) involved that they will report the issue to the DSL and reassure them that they will receive appropriate support and help.
 - Not ask the child or children involved in the incident to disclose information regarding the imagery and not share information about the incident with other members of staff, the child(ren) involved or their, or other, parents and/or carers. This is the responsibility of the DSL.
- DSLs will respond to concerns as set out in the non-statutory UKCIS guidance: [Sharing nudes and semi-nudes: advice for education settings working with children and young people](#) and the local [KSCMP guidance](#). When made aware of a concern involving consensual and non-consensual sharing of nudes and semi-nude images and/or videos:
 - the DSL will hold an initial review meeting to explore the context and ensure appropriate and proportionate safeguarding action is taken in the best interests of any child involved. This may mean speaking with relevant staff and the children involved as appropriate.

- parents and carers will be informed at an early stage and be involved in the process to best support children, unless there is good reason to believe that involving them would put a child at risk of harm.
- All decisions and action taken will be recorded in line with our child protection procedures.
- a referral will be made to ICS and/or the police immediately if:
 - the incident involves an adult (over 18).
 - there is reason to believe that a child has been coerced, blackmailed, or groomed, or there are concerns about their capacity to consent, for example, age of the child or they have special educational needs.
 - the image/videos involve sexual acts and a child under the age of 13, depict sexual acts which are unusual for the child's developmental stage, or are violent.
 - a child is at immediate risk of harm owing to the sharing of nudes and semi-nudes.
- The DSL may choose to involve other agencies at any time if further information/concerns are disclosed at a later date.
- If DSLs are unsure how to proceed, advice will be sought from the Education Safeguarding Service.

10.4 Child Sexual Exploitation (CSE) and Child Criminal Exploitation (CCE)

- Endeavour MAT Schools recognise that CSE and CCE are forms of abuse that occur where an individual or group takes advantage of an imbalance in power to coerce, manipulate or deceive a child into taking part in sexual or criminal activity, in exchange for something the victim needs or wants, and/or for the financial advantage or increased status of the perpetrator or facilitator and/or through violence or the threat of violence. CSE and CCE can affect children, both male and female and can include children who have been moved (commonly referred to as trafficking) for the purpose of exploitation.
- Endeavour MAT Schools recognise that children can become trapped in CCE as perpetrators can threaten victims and their families with violence or entrap and coerce them into debt. Children involved in criminal exploitation often commit crimes themselves which can mean their vulnerability as victims is not always recognised (particularly older children) and they are not treated as victims, despite the harm they have experienced. The experience of girls who are criminally exploited can also be very different to that of boys. We also recognise that boys and girls being criminally exploited may be at higher risk of child sexual exploitation (CSE).
- Endeavour MAT Schools recognise that CSE can occur over time or be a one-off occurrence and may happen without the child's immediate knowledge, for example through others sharing videos or images of them on social media. CSE can affect any child who has been coerced into engaging in sexual activities and includes 16 and 17 year olds who can legally consent to have sex. Some children may not realise they are being exploited, for example they may believe they are in a genuine romantic relationship.
- If staff are concerned that a child may be at risk of CSE or CCE, immediate action should be taken by speaking to the DSL or a deputy.

10.5 Serious Violence

- All staff are made aware of the indicators which may signal children are at risk from or are involved with serious violent crime. These may include unexplained gifts or new possessions, increased absence from school, a change in friendships or relationships with older individuals or groups, a significant decline in

performance, signs of self-harm or a significant change in wellbeing, or signs of assault or unexplained injuries.

- Any concerns regarding serious violence will be reported and responded to in line with other child protection concerns by speaking with a DSL or deputy.
 - The initial response to pupil victims is important and staff will take any allegations seriously and work in ways that support children and keep them safe.

10.6 So-called Honour Based Abuse

- So-called ‘honour’-based abuse (HBA) encompasses incidents or crimes which have been committed to protect or defend the honour of the family and/or the community, including female genital mutilation (FGM), forced marriage, and practices such as breast ironing.
- All forms of HBA are abuse (regardless of the motivation) and concerns should be responded to in line with section 7 of this policy. Staff will report any concerns about HBA to the DSL (or a deputy) if there is an immediate threat the police will be contacted.

Update for 2023

- There has been a change in the law from February 2023 around forced marriage:
 - It is now a crime to carry out any conduct whose purpose is to cause a child to marry before their 18th birthday, even if violence, threats or coercion are not used. This applies to non-binding, unofficial ‘marriages’, as well as legal marriages.
- Whilst all staff will speak to the DSL (or deputy) with regard to any concerns about female genital mutilation (FGM), there is a specific legal duty on teachers.
 - If a teacher, in the course of their work in the profession, discovers that an act of FGM appears to have been carried out on a girl under the age of 18, the teacher must report this to the police.

10.7 Preventing radicalisation

- Endeavour MAT Schools are aware of our duty under section 26 of the Counter-Terrorism and Security Act 2015 (the CTSA 2015), to have “due regard to the need to prevent people from being drawn into terrorism”, also known as the Prevent duty and the [specific obligations](#) placed upon us as an education provider regarding risk assessments, working in partnership, staff training, and IT policies.
- Endeavour MAT Schools recognise that children are vulnerable to extremist ideology and radicalisation and staff will be alert to changes in children’s behaviour which could indicate that they may be in need of help or protection.
- Staff will report any concerns to the DSL (or a deputy), who is aware of the [local procedures](#) to follow, if there is an immediate threat, the police will be contacted via 999.

10.8 Cybercrime

- Endeavour MAT Schools recognise that children with particular skill and interest in computing and technology may inadvertently or deliberately stray into ‘cyber-enabled’ (crimes that can happen offline but are enabled at scale and at speed online) or ‘cyber dependent’ (crimes that can be committed only by using a computer/internet enabled device) cybercrime.

- If staff are concerned that a child may be at risk of becoming involved in cyber-dependent cybercrime, the DSL or a deputy will be informed, and consideration will be given to accessing local support and/or referring into the [Cyber Choices](#) programme, which aims to intervene when young people are at risk of committing, or being drawn into, low level cyber-dependent offences and divert them to a more positive use of their skills and interests.
- Where there are concerns about 'cyber-enabled' crime such as fraud, purchasing of illegal drugs online, child sexual abuse and exploitation, or other areas of concern such as online bullying or general online safety, they will be responded to in line with this and other appropriate policies.

10.9 Domestic Abuse

- Endeavour MAT Schools recognise that domestic abuse can encompass a wide range of behaviours and may be a single incident or a pattern of incidents. That abuse can be, but is not limited to, psychological, physical, sexual, financial, or emotional abuse. Children can be victims of domestic abuse and may see, hear, or experience the effects of abuse at home and/or suffer domestic abuse in their own intimate relationships (teenage relationship abuse). Domestic abuse can have a detrimental and long-term impact on children's health, well-being, development, and ability to learn.
- Endeavour MAT schools work in partnership with Kent Police to provide support to children experiencing domestic abuse as part of [Operation Encompass](#)
- If staff are concerned that a child may be at risk of seeing, hearing, or experiencing domestic abuse in their home or in their own intimate relationships, immediate action should be taken by speaking to the DSL or a deputy.

10.10 Mental Health

- All staff recognise that mental health problems can, in some cases, be an indicator that a child has suffered or is at risk of suffering abuse, neglect or exploitation.
- Staff are aware that children's experiences, for example where children have suffered abuse and neglect, or other potentially traumatic Adverse Childhood Experiences (ACEs), can impact on their mental health, behaviour, and education.
- Staff are well placed to observe children day-to-day and identify those whose behaviour suggests that they may be experiencing a mental health problem or be at risk of developing one.
- If staff have a mental health concern about a child that is also a safeguarding concern, immediate action should be taken by speaking to the DSL or a deputy.

11 Supporting Children Potentially at Greater Risk of Harm

- Whilst all children should be protected, some groups of children are potentially at greater risk of harm.

11.1 Safeguarding Children with Special Educational Needs or Disabilities (SEND)

- Endeavour MAT Schools acknowledge that children with special educational needs or disabilities (SEND) or certain health conditions can face additional safeguarding challenges and barriers for recognising abuse and neglect.
- Endeavour MAT Schools recognise that children with SEND may face additional communication barriers and experience difficulties in managing or reporting abuse or challenges. Children with SEND will be appropriately supported to communicate and ensure that their voice is heard and acted upon.
- All members of staff will be encouraged to appropriately explore possible indicators of abuse such as behaviour, mood changes or injuries and not to assume that they are related to the child's disability. Staff will be mindful that children with SEND or certain medical conditions may be disproportionately impacted by behaviours such as bullying, without outwardly showing any signs.
- Members of staff are encouraged to be aware that children with SEND can be disproportionately impacted by safeguarding concerns, such as exploitation, peer group isolation or bullying including prejudice-based bullying.
- To address these additional challenges, our school will always consider implementing extra pastoral support and attention for children with SEND. The DSL will work closely with the SENDco to plan support as required.

11.2 Children Requiring Mental Health Support

- All staff will be made aware that mental health problems can, in some cases, be an indicator that a child has suffered or is at risk of suffering abuse, neglect or exploitation.
- Staff are aware that children's experiences, for example where children have suffered abuse and neglect, or other potentially traumatic adverse childhood experiences, can impact on their mental health, behaviour and education.
- Staff are well placed to observe children day-to-day and identify those whose behaviour suggests that they may be experiencing a mental health problem or be at risk of developing one.
- If staff have a mental health concern about a child that is also a safeguarding concern, immediate action should be taken by speaking to the DSL or a deputy.
- Endeavour MAT Schools also have trained youth mental health first aiders who are identified, and can be approached by students. Counselling is available for all students that require it. Staff will liaise between parents and students to facilitate this.
- Age appropriate education will be provided to our students to promote positive health, wellbeing and resilience.

11.3 Children Missing from Education and Children Absent from Education

Update 2023

- Children absent from education are on the school roll, but are regularly not attending
- Children missing education aren't on any school roll or being educated elsewhere
- These are vital warning signs of safeguarding risks to a child

- Children missing and absent from education, are a vital warning sign to a range of safeguarding issues including neglect, sexual abuse, and child sexual and criminal exploitation, particularly county lines. A robust response will support the identification of such abuse and may help prevent the risk of children going missing in the future.
- Where the school have concerns that a child is missing from education, we will respond in line with our statutory duties and local policies. Local support is available via the [PRU, Inclusion and Attendance Service \(PIAS\)](#).
- Where possible, the school will hold more than one emergency contact number for each student so we have additional options to make contact with a responsible adult if a child missing education is also identified as being a welfare and/or safeguarding concern.

11.4 Elective Home Education Amend as appropriate to setting type.

- Where a parent/carer expresses their intention to remove a child from school with a view to educating at home, we will respond in line with [national Elective Home Education guidance](#) and local [Kent guidance](#) and will work together with parents/carers and other key professionals and organisations to ensure decisions are made in the best interest of the child.

11.5 Children who need a Social Worker (Child in need and child protection plans)

- The DSL will hold details of social workers working with children in the school so that decisions can be made in the best interests of the child's safety, welfare, and educational outcomes.
- Where children have a social worker, this will inform school decisions about their safety and promoting their welfare, for example, responding to unauthorised absence and provision of pastoral and/or academic support.

11.6 Looked after children, previously looked after children and care leavers

- Endeavour MAT Schools recognise the common reason for children becoming looked after is as a result of abuse and/or neglect and a previously looked after child also potentially remains vulnerable.
- Each school has appointed a '[designated teacher](#)' who works with local authorities to promote the educational achievement of registered pupils who are looked after or who have been previously looked after.
- The designated teacher will work with the DSL to ensure appropriate staff have the information they need in relation to a child's looked after legal status, contact arrangements with birth parents or those with parental responsibility, care arrangements and the levels of authority delegated to the carer by the authority looking after them.
- Where a child is looked after, the DSL will hold details of the social worker and the name of the virtual school head in the authority that looks after the child.
- Where the school believe a child is being cared for as part of a private fostering arrangement (occurs when a child under 16 or 18 if the child is disabled is cared for and lives with an adult who is not a relative for 28 days or more) there is a duty to recognise these arrangements and inform the Local Authority via the Front Door.

- Where a child is leaving care, the DSL will hold details of the local authority Personal Advisor appointed to guide and support them and will liaise with them as necessary regarding any issues of concern.

11.7 Children who are Lesbian, Gay, Bi or Trans (LGBT)

- The fact that a child or a young person may be LGBT is not in itself an inherent risk factor for harm, however, Endeavour MAT Schools recognise that children who are LGBT or are perceived by other children to be LGBT (whether they are or not) can be targeted by other children or others within the wider community.
- Endeavour MAT Schools recognise risks can be compounded where children who are LGBT lack a trusted adult with whom they can be open. LGBT is included within our Relationships Education/ Relationship and Sex Education and Health Education curriculum and our staff will endeavour to reduce the additional barriers faced and provide a safe space for children to speak out or share any concerns.

12 Staff Induction, Awareness and Training

- All members of staff have been provided with a copy of part one or annex A of 'Keeping Children Safe in Education' 2023 which covers safeguarding information for staff.
 - School leaders, including the DSL will read KCSIE in its entirety.
 - School leaders and all members of staff who work directly with children will read annex B.
 - All members of staff have signed to confirm that they have read and understood the national guidance shared with them, which is stored on the single central record.
- The DSL will ensure that all new staff and volunteers (including agency and third-party staff) receive safeguarding and child protection training (including online safety), including information to ensure they are aware of the school internal safeguarding processes, as part of their induction, which will involve specific DSL training. This includes online learning and presentations. This training is regularly updated and is in line with advice from the safeguarding partners.
- All staff members (including agency and third-party staff) will receive appropriate child protection training (including online safety) to ensure they are aware of a range of safeguarding issues; this training will be updated at least annually as part of the CPD cycle.
- Safeguarding training for staff, including online safety training, will be integrated, aligned and considered as part of the whole school safeguarding approach and wider staff training and curriculum planning.
- In addition to specific child protection training, all staff will receive regular safeguarding and child protection updates, at least annually, to provide them with relevant skills and knowledge to safeguard children effectively. This will be carried out in staff meetings, via emails and briefing updates.
- Staff will be encouraged to contribute to and shape school safeguarding arrangements and child protection policies. This will be achieved through seeking staff feedback and the Staff safeguarding Team.
- The DSL and Head Teacher will provide an annual report to the governing body detailing safeguarding training undertaken by all staff and will maintain an up to date register of who has been trained.

- All Governors and Trustees receive appropriate safeguarding and child protection training which covers their specific strategic responsibilities on a regular basis.

13 Safer Working Practice

- All members of staff are required to work within clear guidelines on Safer Working Practice, as outlined in the school's Code of Conduct.
- Staff should be aware of the school's Behaviour Policy and any physical interventions must be in line with the DFE guidelines on the use of reasonable force 2013. Since the school is a secure site the use of reasonable force to prevent students from hurting themselves should be limited. Any incident where physical interventions have been used should occur in the presence of an additional member of staff and written up immediately after the incident include ABC: Antecedents, Behaviour and Consequences.
- The DSL will ensure that all staff and volunteers (including agency and third-party staff) have read our child protection policy and are aware of the school expectations regarding safe and professional practice via the staff code of conduct and Acceptable Use Policy (AUP).
- All staff will be made aware of the professional risks associated with the use of social media and electronic communication (such as email, mobile phones, texting, social networking). Staff will adhere to relevant school policies including the, Acceptable Use Policies, and Social Media section found in the Online policy.

14 Staff Supervision and Support

- Any member of staff affected by issues arising from concerns for children's welfare or safety can seek support from the DSL.
- The induction process will include familiarisation with child protection responsibilities and procedures to be followed if members of staff have any concerns about a child's safety or welfare.
- The school will provide appropriate supervision and support for all members of staff to ensure that:
 - All staff are competent to carry out their responsibilities for safeguarding and promoting the welfare of children
 - All staff will be supported by the DSL in their safeguarding role.
 - All members of staff have regular reviews of their own practice to ensure they improve over time.
- The DSL will also put staff in touch with outside agencies for professional support if they so wish. Staff can also approach organisations such as their Union, the Education Support Partnership or other similar organisations directly.

15 Safer Recruitment and Allegations against Staff

Safer recruitment and safeguarding checks

- Endeavour MAT Schools are committed to ensure that we develop a safe culture and that all steps are taken to recruit staff and volunteers who are safe to work with our students and staff.
 - The Governing Body and Leadership Team are responsible for ensuring that the school follows safe recruitment processes outlined within guidance.
- Endeavour MAT Schools are responsible for maintaining an accurate Single Central Record (SCR) in line with statutory guidance.
- The Governing Body will ensure that there is at least one of the persons who conducts an interview has completed safer recruitment training.
- We are also committed to supporting the statutory guidance from the Department for Education on the application of the Childcare (Disqualification) Regulations 2009 and related obligations under the Childcare Act 2006 in schools.
- We advise all staff to disclose any reason that may affect their suitability to work with children including convictions, cautions, court orders, cautions, reprimands and warnings.
- Endeavour MAT Schools will follow relevant guidance in Keeping Children Safe in Education 2022 (Part Three, 'Safer Recruitment') and from The Disclosure and Barring Service (DBS)
- Where the school places a student with an alternative provision provider, the school will continue to be responsible for the safeguarding of that child.
 - The school will undertake appropriate checks to ensure the provider meets the needs of the student, including written confirmation that appropriate safeguarding checks have been carried out on individuals working at the establishment.
- Where the school organises work experience placements, we will follow the advice and guidance as identified in part Three of KCSIE 2023.
- Where the school organises homestays as part of exchange visits, we will follow the advice and guidance as identified in part Three and Annex E of KCSIE 2023.

16 Allegations/concerns raised in relation to teachers, including supply teachers, other staff, volunteers and contractors

- Any concerns or allegations about staff will be recorded and dealt with appropriately in line with national (Part four of KCSIE 2023) and the [local Kent allegations arrangements](#). In depth information can be found within our 'Managing Allegations against Staff' and code of conduct policy. This can be found in the staff room.
- Any concerns or allegations about staff, including those which do not meet the allegation/harm threshold (15.2) will be recorded and dealt with appropriately in line with national and local guidance. Ensuring

concerns are dealt with effectively will protect those working in or on behalf of the school from potential false allegations or misunderstandings.

- Where Head Teachers are unsure how to respond, for example if the school is unsure if a concern meets the harm 'thresholds', advice will be sought via the [Local Authority Designated Officer](#) (LADO) Enquiry Line and/or the [Education Safeguarding Service](#).
- In all cases where allegations are made against staff or low-level concerns are reported, once proceedings have been concluded, the Head Teachers (and if they have been involved the LADO) will consider the facts and determine whether any lessons can be learned and if any improvements can be made.

16.1 Concerns that meet the 'harm threshold'

- Endeavour MAT Schools recognise that it is possible for any member of staff, including volunteers, governors, contractors, agency and third-party staff (including supply teachers) and visitors to behave in a way that indicates a person would pose a risk of harm if they continue to work in their present position, or in any capacity with children in a school or college. This includes when someone has;
 - behaved in a way that has harmed a child, or may have harmed a child and/or
 - possibly committed a criminal offence against or related to a child and/or;
 - behaved towards a child or children in a way that indicates he or she may pose a risk of harm to children; and/or
 - behaved or may have behaved in a way that indicates they may not be suitable to work with children.
- Allegations against staff which meet this threshold will be referred immediately to the Head Teacher who will contact the LADO in respect of the child and staff member. In the event of allegations of abuse being made against the Head Teacher, staff are advised that allegations should be reported to the chair of governors who will contact the to agree further action to be taken LADO.

16.2 Concerns that do not meet the 'harm threshold'

- Endeavour MAT Schools may also need to take action in response to 'low-level' concerns about staff. Additional information regarding low-level concerns is contained with our code of conduct– this includes what a low-level concern is, the importance of sharing them and the confidential procedure to follow when sharing them.
 - Endeavour MAT Schools have an open and transparent culture in which all concerns about all adults working in or on behalf of the school are dealt with promptly and appropriately; this enables us to identify inappropriate, problematic or concerning behaviour early, minimise the risk of abuse and ensure that adults working in or on behalf of the school are clear about and act within appropriate professional boundaries, and in accordance with our ethos and values.
 - A 'low-level' concern does not mean that it is insignificant; a low-level concern is any concern that an adult working in or on behalf of the school may have acted in a way that is inconsistent with our code of conduct, including inappropriate conduct outside of work and does not meet the 'harm threshold' or is otherwise not serious enough to consider a referral to the LADO.
 - Low-level concerns may arise in several ways and from a number of sources. For example, suspicion, complaints, or allegations made by a child, parent or other adult within or outside of the organisation, or as a result of vetting checks.

- It is crucial that all low-level concerns are shared responsibly, recorded and dealt with appropriately to protect staff from becoming the subject of potential false low-level concerns or misunderstandings.
- Low-level concerns should be shared confidentially in line with our code of conduct
 - Where low-level concerns are reported to the school the Head Teacher will be informed of all low-level concerns and is the ultimate decision maker in respect of the response to all low level concerns. ○ The Head Teacher will share concerns and liaise with the LADO enquiries officer via the LADO Enquiry Line.
 - Low-level concerns shared about supply staff and contractors will be shared with their employers so any potential patterns of inappropriate behaviour can be identified.
 - If the school is in any doubt as to whether the information which has been shared about a member of staff as a low-level concern in fact meets the harm threshold, we will consult with the LADO.
- Low-level concerns will be recorded in writing and reviewed so potential patterns of concerning, problematic or inappropriate behaviour can be identified.
 - Records will be kept confidential and will be held securely and retained and in compliance with the Data Protection Act 2018 and the UK General Data Protection Regulation (UK GDPR) and other relevant policies and procedures (for example data retention policies). ○ Where a pattern is identified, the school will implement appropriate action, for example consulting with the LADO enquiry line and following our disciplinary procedures.

16.3 Safe Culture

- As part of our approach to safeguarding, the Trust has created and embedded a culture of openness, trust and transparency in which our values and expected behaviour as set out in our code of conduct are constantly lived, monitored and reinforced by all staff (including supply teachers, volunteers and contractors) and where all concerns are dealt with promptly and appropriately.
- Staff are encouraged and should feel confident to self-refer, if they have found themselves in a situation which could be misinterpreted, might appear compromising to others, and/or on reflection they believe they have behaved in such a way that they consider falls below the expected professional standards. This includes where concerns may be felt to be deliberately invented or malicious; such allegations are extremely rare and as such all concerns should be reported and recorded.
- All staff and volunteers should feel able to raise any concerns about poor or unsafe practice and potential failures in the school safeguarding regime. The leadership team at Endeavour MAT Schools will take all concerns or allegations received seriously.
- All members of staff are made aware of the school Whistleblowing procedures. It is a disciplinary offence not to report concerns about the conduct of a colleague that could place a child at risk.
- Staff can access the NSPCC whistleblowing helpline if they do not feel able to raise concerns regarding child protection failures internally. Staff can call 0800 028 0285 (8:00 AM to 8:00 PM Monday to Friday) or email help@nspcc.org.uk.

- Endeavour MAT Schools has a legal duty to refer to the Disclosure and Barring Service (DBS) anyone who has harmed, or poses a risk of harm, to a child, or if there is reason to believe the member of staff has committed one of a number of listed offences, and who has been removed from working (paid or unpaid) in regulated activity or would have been removed had they not left. The DBS will consider whether to bar the person.
 - If these circumstances arise in relation to a member of staff at our school, a referral will be made as soon as possible after the resignation or removal of the individual in accordance with advice from the LADO.

17 Opportunities to teach safeguarding

- Endeavour MAT Schools will ensure that children are taught about safeguarding, including online safety, as part of providing a broad and balanced curriculum. This will include covering relevant issues through Relationships and Sex Education and Health Education and PSHE programmes.
- We recognise that school play an essential role in helping children to understand and identify the parameters of what is appropriate child and adult behaviour, what is 'safe', to recognise when they and others close to them are not safe, and how to seek advice and support when they are concerned. Our curriculum provides opportunities for increasing self-awareness, self-esteem, social and emotional understanding, assertiveness and decision making so that learners have a range of age appropriate contacts and strategies to ensure their own protection and that of others.
- Endeavour MAT Schools recognise the crucial role we have to play in preventative education. Preventative education is most effective in the context of a whole-school approach which prepares students for life in modern Britain and creates a culture of zero tolerance for sexism, misogyny/misandry, homophobia, biphobia and sexual violence/harassment.
- Endeavour MAT Schools recognise has a clear set of values and standards, upheld and demonstrated throughout all aspects of school life which are underpinned by our behaviour policy and pastoral support system, as well as by a planned programme of evidence-based RSHE delivered in regularly timetabled lessons and reinforced throughout the whole curriculum. Our programme is fully inclusive and developed to be age and stage of development appropriate.
- Endeavour MAT Schools recognise that a one size fits all approach may not be appropriate for all children, and a more personalised or contextualised approach for more vulnerable children, victims of abuse and some SEND children might be needed.
- Our school systems support children to talk to a range of staff. Students will be listened to and heard, and their concerns will be taken seriously and acted upon as appropriate.

18 Online Safety

- It is recognised by Endeavour MAT Schools that the use of technology presents challenges and risks to children and adults both inside and outside of school. It is essential that children are safeguarded from potentially harmful and inappropriate material or behaviours online. Endeavour MAT Schools will adopt a whole school approach to online safety which will empower, protect, and

educate our learners and staff in their use of technology, and establish mechanisms to identify, intervene in, and escalate any concerns where appropriate.

- The DSL has overall responsibility for online safeguarding within the school.
- Endeavour MAT Schools identifies that the issues can be broadly categorised into three areas of risk:
 - **content:** being exposed to illegal, inappropriate or harmful material
 - **contact:** being subjected to harmful online interaction with other users
 - **conduct:** personal online behaviour that increases the likelihood of, or causes, harm.
- The DSL and leadership team have read annex C regarding Online Safety within 'Keeping Children Safe in Education' September 2023
- Endeavour MAT Schools recognise the specific risks that can be posed by mobile phones and smart technology, including cameras and wearable technology and in accordance with KCSIE September 2023 has appropriate policies in place that are shared and understood by all members of the school community. Further information reading the specific approaches relating to this can be found in the Online safety policy and Acceptable Use Policy which can be found on the website.
- Endeavour MAT Schools will ensure that appropriate filtering and monitoring systems are in place when pupils and staff access school systems and internet provision.
 - Endeavour MAT Schools acknowledges that whilst filtering and monitoring is an important part of school's online safety responsibilities, it is only one part of our approach to online safety. Pupils and adults may have access to systems external to the school control such as mobile phones and other internet enabled devices and technology and where concerns are identified appropriate action will be taken.
- Endeavour MAT Schools will ensure a comprehensive whole school curriculum response is in place to enable all pupils to learn about and manage online risks effectively and will support parents and the wider school community (including all members of staff) to become aware and alert to the need to keep children safe online.
- The DSL will respond to online safety concerns reported in line with our child protection and other associated policies, including our Behaviour Policy.
 - Internal sanctions and/or support will be implemented as appropriate.
 - Where necessary, concerns will be escalated and reported to relevant partner agencies in line with local policies and procedures.
- The Head Teacher will be informed of online safety concerns by the DSL, as appropriate. The named governor for safeguarding will report on online safety practice and incidents, including outcomes, on a regular basis to the wider governing body
- Endeavour MAT Schools uses a wide range of technology. This includes computers, laptops, tablets, the internet, our learning platform, intranet and email systems.
 - All school owned devices and systems will be used in accordance with our acceptable use policies and with appropriate safety and security measures in place.

Update 2023

- At Endeavour MAT Schools we will do all we reasonably can to limit children’s exposure to online risks through school provided IT systems and will ensure that appropriate filtering and monitoring systems are in place. Filtering and monitoring systems protect pupils and staff from harmful and inappropriate content online
- All users will be informed that use of our systems can be monitored, and that monitoring will be in line with data protection, human rights, and privacy legislation.
- Harmful content may be legal or illegal, and could include:
 - o Pornography
 - o Promotion of self-harm and/or suicide
 - o Misogyny
 - o Racism
 - o Fake news
 - o Extremist views
- All staff should follow policies and procedures, report any problems, and monitor what’s happening on screens in school
 - o Filtering breaches or concerns identified through our monitoring approaches will be recorded and reported to the DSL who will respond as appropriate.
 - o Any access to material believed to be illegal will be reported immediately to the appropriate agencies, such as the [Internet Watch Foundation](#) and the police.
 - o When implementing appropriate filtering and monitoring, Endeavour MAT Schools will ensure that “over blocking” does not lead to unreasonable restrictions as to what children can be taught with regards to online teaching and safeguarding.

18.1 Information Security and Access Management

- Endeavour MAT Schools are responsible for ensuring an appropriate level of security protection procedures are in place, in order to safeguard our systems as well as staff and learners. Further information can be found in list name of relevant policies e.g. acceptable use policies and/or online safety policy.
- Endeavour MAT Schools will review the effectiveness of these procedures periodically to keep up with evolving cyber-crime technologies.

18.2 Staff Training

- Endeavour MAT Schools will ensure that all staff receive online safety training as part of induction and that ongoing online safety training and update for all staff will be integrated, aligned and considered as part of our overarching safeguarding approach.

18.3 Working with Parents/Carers

- Endeavour MAT Schools will build a partnership approach to online safety and will support parents/carers to become aware and alert of the potential online benefits and risks for children by: Keeping parents informed of updates through our school blog and introducing age appropriate issues at expectations evenings.

18.4 Remote Learning

- Endeavour MAT Schools will ensure any remote sharing of information, communication and use of online learning tools and systems will be in line with privacy and data protection requirements
- Staff and learners will engage with remote teaching and learning in line with existing behaviour principles as set out in our Behaviour Policy and Acceptable Use Policies.
- Staff and pupils will be encouraged to report issues experienced at home and concerns will be responded to in line with our child protection and other relevant policies.
- When delivering remote learning, staff will follow our Remote Learning Acceptable Use Policy (AUP).
- Parents/carers will be encouraged to ensure children are appropriately supervised online and that appropriate parent controls are implemented at home.

19 The Use of School Premises by Other Organisations

- Where services or activities are provided separately by another body using the school premises, the Head Teacher and Governing Body will seek written assurance that the organisation concerned has appropriate policies and procedures in place with regard to safeguarding children and child protection and that relevant safeguarding checks have been made in respect of staff and volunteers. If this assurance is not achieved then an application to use premises will be refused.
- Safeguarding requirements will be included in any transfer of control agreement (i.e. lease or hire agreement), as a condition of use and occupation of the premises. Failure to comply with this will lead to termination of the agreement.

20. Site security

- All members of staff have a responsibility for maintaining awareness of buildings and grounds security and for reporting concerns that may come to light.
- Appropriate checks will be undertaken in respect of visitors and volunteers coming into school as outlined within guidance. Visitors will be expected to sign in and out via the office visitors log and to display a visitor's badge whilst on school site. Any individual who is not known or identifiable should be challenged for clarification and reassurance.
- Any individual who is not known or identifiable on site should be challenged for clarification and reassurance.
- The school will not accept the behaviour of any individual (parent or other) that threatens school security or leads others (pupil or adult) to feel unsafe. Such behaviour will be treated as a serious concern and may result in a decision to refuse access for that individual to the school site
- Staff and visitors will be expected to adhere to any safety arrangements implemented because of Covid-19 restrictions.

21 Local Support

All members of staff in Endeavour MAT Schools are made aware of local support available:

- **Contact details for Area Safeguarding Advisor (Education Safeguarding Service)**
 - NORTH KENT (Dartford, Gravesham, Sevenoaks) Worrall House, 30 Kings Hill Avenue, West Malling, ME19 4AE
 - Anoop Kandola, Area Safeguarding Advisor
 - 03000 412445
 - Anoop.Kandola@theeducationpeople.org

- **Contact details for Online Safety in the Education Safeguarding Service**
 - Rebecca Avery, Education Safeguarding Advisor (Online Protection):
 - Ashley Assiter, Online Safety Development Officer
 - 03000 415797
 - esafetyofficer@kent.gov.uk (non-urgent issues only)

- **Contact details for the LADO**
 - Telephone: 03000 410888
 - Email: kentchildrenslado@kent.gov.uk

- **Children's Social Work Services**
 - Integrated Front Door: 03000 411111
 - Out of Hours Number: 03000 419191

- **Kent Police**
 - 101 (or 999 if there is an immediate risk of harm)

- **Kent Safeguarding Children Board (KSCB)**
 - kscb@kent.gov.uk
 - 03000 421126

- **Sally Green – Prevent Education Officer Medway, North and West Kent**
 - 03000 413139

22 National Support

Support for staff

- Education Support Partnership: www.educationsupportpartnership.org.uk
- Professional Online Safety Helpline: www.saferinternet.org.uk/helpline

Support for Pupils

- NSPCC: www.nspcc.org.uk
- ChildLine: www.childline.org.uk
- Papyrus: www.papyrus-uk.org
- Young Minds: www.youngminds.org.uk
- The Mix: www.themix.org.uk

Support for adults

- Family Lives: www.familylives.org.uk
- Crime Stoppers: www.crimestoppers-uk.org
- Victim Support: www.victimsupport.org.uk
- Kidscape: www.kidscape.org.uk
- The Samaritans: www.samaritans.org
- Mind: www.mind.org.uk
- NAPAC (National Association for People Abused in Childhood): napac.org.uk
- MOSAC: www.mosac.org.uk
- Action Fraud: www.actionfraud.police.uk

Support for Learning Disabilities

- Respond: www.respond.org.uk
- Mencap: www.mencap.org.uk

Domestic Abuse

- Refuge: www.refuge.org.uk
- Women's Aid: www.womensaid.org.uk
- Men's Advice Line: www.mensadvice.org.uk
- Mankind: www.mankindcounselling.org.uk

Honour based Violence

- Forced Marriage Unit: <https://www.gov.uk/guidance/forced-marriage>

Sexual Abuse and CSE

- Lucy Faithfull Foundation: www.lucyfaithfull.org.uk
- Stop it Now!: www.stopitnow.org.uk
- Parents Protect: www.parentsprotect.co.uk
- CEOP: www.ceop.police.uk
- Marie Collins Foundation: www.mariecollinsfoundation.org.uk
- Internet Watch Foundation (IWF): www.iwf.org.uk

Online Safety

- Childnet International: www.childnet.com
- UK Safer Internet Centre: www.saferinternet.org.uk
- Parents Info: www.parentinfo.org
- Internet Matters: www.internetmatters.org
- Net Aware: www.net-aware.org.uk
- ParentPort: www.parentport.org.uk
- Get safe Online: www.getsafeonline.org

Radicalisation and hate

- Educate against Hate: www.educateagainsthate.com
- Counter Terrorism Internet Referral Unit: www.gov.uk/report-terrorism
- True Vision: www.report-it.org.uk

Appendix 1: Categories of Abuse

All staff should be aware that abuse, neglect, and safeguarding issues are rarely standalone events that can be covered by one definition or label. In most cases multiple issues will overlap with one another.

Abuse: a form of maltreatment of a child. Somebody may abuse or neglect a child by inflicting harm, or by failing to act to prevent harm. They may be abused by an adult or adults or another child or children. It should be noted that abuse can be carried out both on and offline and be perpetrated by men, women, and children.

Sexual abuse: involves forcing or enticing a child or young person to take part in sexual activities, not necessarily involving a high level of violence, whether or not the child is aware of what is happening. The activities may involve physical contact, including assault by penetration (for example rape or oral sex) or non-penetrative acts such as masturbation, kissing, rubbing, and touching outside of clothing. They may also include non-contact activities, such as involving children in looking at, or in the production of, sexual images, watching sexual activities, encouraging children to behave in sexually inappropriate ways, or grooming a child in preparation for abuse (including via the internet). Sexual abuse is not solely perpetrated by adult males. Women can also commit acts of sexual abuse, as can other children.

Signs that MAY INDICATE Sexual Abuse

- Sudden changes in behaviour and performance
- Displays of affection which are sexual and age inappropriate
- Self-harm, self-mutilation or attempts at suicide
- Alluding to secrets which they cannot reveal
- Tendency to cling or need constant reassurance
- Regression to younger behaviour for example thumb sucking, playing with discarded toys, acting like a baby
- Distrust of familiar adults, for example, anxiety of being left with relatives, a childminder or lodger
- Unexplained gifts or money
- Depression and withdrawal
- Fear of undressing for PE
- Sexually transmitted disease
- Fire setting

Physical abuse: a form of abuse which may involve hitting, shaking, throwing, poisoning, burning, or scalding, drowning, suffocating or otherwise causing physical harm to a child. Physical harm may also be caused when a parent or carer fabricates the symptoms of, or deliberately induces, illness in a child.

Signs that MAY INDICATE physical abuse

- Bruises and abrasions around the face
- Damage or injury around the mouth

- Bi-lateral injuries such as two bruised eyes
- Bruising to soft area of the face such as the cheeks
- Fingertip bruising to the front or back of torso
- Bite marks
- Burns or scalds (unusual patterns and spread of injuries)
- Deep contact burns such as cigarette burns
- Injuries suggesting beatings (strap marks, welts)
- Covering arms and legs even when hot
- Aggressive behaviour or severe temper outbursts.
- Injuries need to be accounted for. Inadequate, inconsistent, or excessively plausible explanations or a delay in seeking treatment should signal concern.

Emotional abuse: the persistent emotional maltreatment of a child such as to cause severe and adverse effects on the child's emotional development. It may involve conveying to a child that they are worthless or unloved, inadequate, or valued only insofar as they meet the needs of another person. It may include not giving the child opportunities to express their views, deliberately silencing them or 'making fun' of what they say or how they communicate. It may feature age or developmentally inappropriate expectations being imposed on children. These may include interactions that are beyond a child's developmental capability as well as overprotection and limitation of exploration and learning or preventing the child participating in normal social interaction. It may involve seeing or hearing the ill-treatment of another. It may involve serious bullying (including cyberbullying), causing children frequently to feel frightened or in danger, or the exploitation or corruption of children. Some level of emotional abuse is involved in all types of maltreatment of a child, although it may occur alone.

Signs that MAY INDICATE emotional abuse

- Over reaction to mistakes
- Lack of self-confidence/esteem
- Sudden speech disorders
- Self-harming
- Eating Disorders
- Extremes of passivity and/or aggression
- Compulsive stealing
- Drug, alcohol, solvent abuse
- Fear of parents being contacted
- Unwillingness or inability to play
- Excessive need for approval, attention, and affection

Neglect: the persistent failure to meet a child's basic physical and/or psychological needs, likely to result in the serious impairment of the child's health or development. Neglect may occur during pregnancy as a result of maternal substance abuse. Once a child is born, neglect may involve a parent or carer failing to: provide adequate food, clothing, and shelter (including exclusion from home or abandonment); protect a child from physical and emotional harm or danger; ensure adequate supervision (including the use of inadequate care-givers); or ensure access to

appropriate medical care or treatment. It may also include neglect of, or unresponsiveness to, a child's basic emotional needs.

Signs that MAY INDICATE neglect.

- Constant hunger
- Poor personal hygiene
- Constant tiredness
- Inadequate clothing
- Frequent lateness or non-attendance
- Untreated medical problems
- Poor relationship with peers
- Compulsive stealing and scavenging
- Rocking, hair twisting and thumb sucking
- Running away
- Loss of weight or being constantly underweight
- Low self esteem

Appendix 2: Support Organisations

NSPCC 'Report Abuse in Education' Helpline

- 0800 136 663 or help@nspcc.org.uk

National Organisations

- NSPCC: www.nspcc.org.uk
- Barnardo's: www.barnardos.org.uk
- Action for Children: www.actionforchildren.org.uk
- Children's Society: www.childrensociety.org.uk
- Centre of Expertise on Child Sexual Abuse: www.csacentre.org.uk

Support for Staff

- Education Support Partnership: www.educationsupportpartnership.org.uk
- Professional Online Safety Helpline: www.saferinternet.org.uk/helpline
- Harmful Sexual Behaviour Support Service: <https://swgfl.org.uk/harmful-sexual-behaviour-supportservice>

Support for pupils/students

- ChildLine: www.childline.org.uk
- Papyrus: www.papyrus-uk.org
- The Mix: www.themix.org.uk
- Shout: www.giveusashout.org
- Fearless: www.fearless.org
- Victim Support: www.victimsupport.org.uk

Support for Adults

- Family Lives: www.familylives.org.uk
- Crime Stoppers: www.crimestoppers-uk.org
- Victim Support: www.victimsupport.org.uk
- The Samaritans: www.samaritans.org
- NAPAC (National Association for People Abused in Childhood): www.napac.org.uk
- MOSAC: www.mosac.org.uk
- Action Fraud: www.actionfraud.police.uk
- Shout: www.giveusashout.org
- Advice now: www.advicenow.org.uk

Support for Learning Disabilities

- Respond: www.respond.org.uk
- Mencap: www.mencap.org.uk
- Council for Disabled Children: <https://councilfordisabledchildren.org.uk>

Contextual Safeguarding Network

- <https://contextualsafeguarding.org.uk/>

Kent Resilience Hub

- <https://kentresiliencehub.org.uk/>

Substance Misuse

- We are with you (formerly Addaction): www.wearewithyou.org.uk/services/kent-for-young-people/
- Talk to Frank: www.talktofrank.com

Domestic Abuse

- Domestic abuse services: www.domesticabuseservices.org.uk
- Refuge: www.refuge.org.uk
- Women's Aid: www.womensaid.org.uk
- Men's Advice Line: www.mensadvice.org.uk
- Mankind: www.mankindcounselling.org.uk
- National Domestic Abuse Helpline: www.nationaldahelpline.org.uk
- Respect Phonenumber: <https://respectphonenumber.org.uk>

Criminal and Sexual Exploitation

- National Crime Agency: www.nationalcrimeagency.gov.uk/who-we-are
- It's not okay: www.itsnotokay.co.uk
- NWG Network: www.nwgnetwork.org
- County Lines Toolkit for Professionals:
www.childrenssociety.org.uk/information/professionals/resources/county-lines-toolkit

Honour Based Abuse

- Karma Nirvana: <https://karmanirvana.org.uk>
- Forced Marriage Unit: www.gov.uk/guidance/forced-marriage
- FGM Factsheet:

[https://assets.publishing.service.gov.uk/government/uploads/system/uploads/attachment_data/file/](https://assets.publishing.service.gov.uk/government/uploads/system/uploads/attachment_data/file/496415/6_1639_HO_SP_FGM_mandatory_reporting_Fact_sheet_Web.pdf)

[496415/6_1639_HO_SP_FGM_mandatory_reporting_Fact_sheet_Web.pdf](https://assets.publishing.service.gov.uk/government/uploads/system/uploads/attachment_data/file/496415/6_1639_HO_SP_FGM_mandatory_reporting_Fact_sheet_Web.pdf)

- Mandatory reporting of female genital mutilation: procedural information:
www.gov.uk/government/publications/mandatory-reporting-of-female-genital-mutilation-proceduralinformation
- The right to choose - government guidance on forced marriage:
www.gov.uk/government/publications/the-right-to-choose-government-guidance-on-forcedmarriage

Child-on-Child abuse, including bullying, sexual violence and harassment

- Rape Crisis: <https://rapecrisis.org.uk>
- Brook: www.brook.org.uk
- Disrespect Nobody: www.disrespectnobody.co.uk
- Upskirting – know your rights: www.gov.uk/government/news/upskirting-know-your-rights
- Lucy Faithfull Foundation: www.lucyfaithfull.org.uk

- Stop it Now! www.stopitnow.org.uk
- Parents Protect: www.parentsprotect.co.uk
- Anti-Bullying Alliance: www.anti-bullyingalliance.org.uk
- Diana Award: www.antibullyingpro.com/
- Bullying UK: www.bullying.co.uk
- Kidscape: www.kidscape.org.uk

Online Safety

- NCA-CEOP: www.ceop.police.uk and www.thinkuknow.co.uk
- Internet Watch Foundation (IWF): www.iwf.org.uk
- Childnet: www.childnet.com
- UK Safer Internet Centre: www.saferinternet.org.uk
- Report Harmful Content: <https://reportharmfulcontent.com>
- Marie Collins Foundation: www.mariecollinsfoundation.org.uk
- Internet Matters: www.internetmatters.org
- NSPCC: www.nspcc.org.uk/onlinesafety
- Get Safe Online: www.getsafeonline.org
- Parents Protect: www.parentsprotect.co.uk
- Cyber Choices: <https://nationalcrimeagency.gov.uk/what-we-do/crime-threats/cybercrime/cyberchoices>
- National Cyber Security Centre (NCSC): www.ncsc.gov.uk

Mental Health

- Mind: www.mind.org.uk
- Moodspark: <https://moodspark.org.uk>
- Young Minds: www.youngminds.org.uk
- We are with you: www.wearewithyou.org.uk/services/kent-for-young-people/
- Anna Freud: www.annafreud.org/schools-and-colleges/

Radicalisation and hate

- Educate against Hate: www.educateagainsthate.com
- Counter Terrorism Internet Referral Unit: www.gov.uk/report-terrorism
- True Vision: www.report-it.org.uk

Children with Family Members in Prison

- National information Centre on Children of Offenders (NICCO): <https://www.nicco.org.uk/>